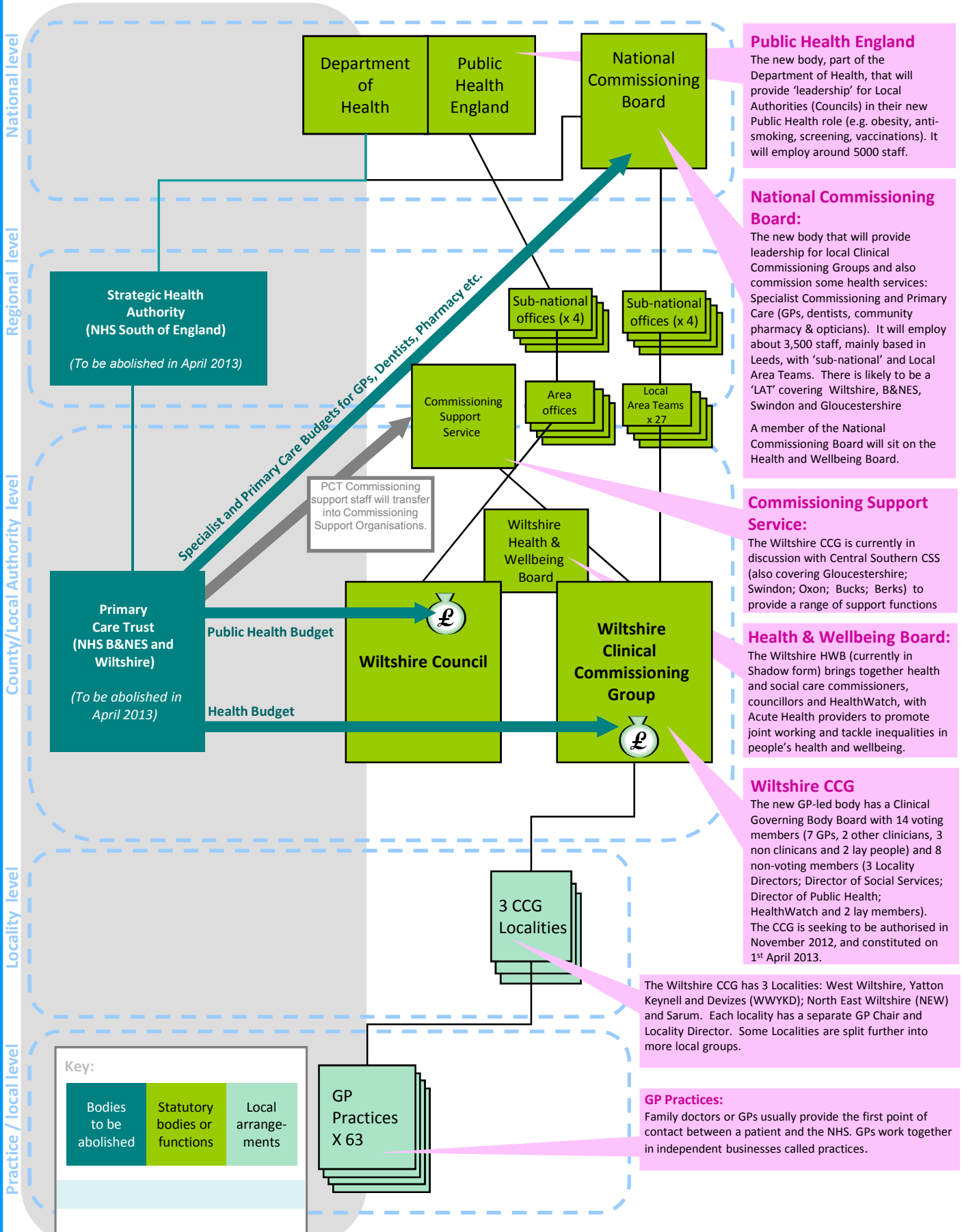


The NHS Reforms: *The old and the new*

The old ...

... and the new ...



Public Health England
The new body, part of the Department of Health, that will provide 'leadership' for Local Authorities (Councils) in their new Public Health role (e.g. obesity, anti-smoking, screening, vaccinations). It will employ around 5000 staff.

National Commissioning Board:
The new body that will provide leadership for local Clinical Commissioning Groups and also commission some health services: Specialist Commissioning and Primary Care (GPs, dentists, community pharmacy & opticians). It will employ about 3,500 staff, mainly based in Leeds, with 'sub-national' and Local Area Teams. There is likely to be a 'LAT' covering Wiltshire, B&NES, Swindon and Gloucestershire. A member of the National Commissioning Board will sit on the Health and Wellbeing Board.

Commissioning Support Service:
The Wiltshire CCG is currently in discussion with Central Southern CSS (also covering Gloucestershire; Swindon; Oxon; Bucks; Berks) to provide a range of support functions

Health & Wellbeing Board:
The Wiltshire HWB (currently in Shadow form) brings together health and social care commissioners, councillors and HealthWatch, with Acute Health providers to promote joint working and tackle inequalities in people's health and wellbeing.

Wiltshire CCG
The new GP-led body has a Clinical Governing Body Board with 14 voting members (7 GPs, 2 other clinicians, 3 non clinicians and 2 lay people) and 8 non-voting members (3 Locality Directors; Director of Social Services; Director of Public Health; HealthWatch and 2 lay members). The CCG is seeking to be authorised in November 2012, and constituted on 1st April 2013.

The Wiltshire CCG has 3 Localities: West Wiltshire, Yatton Keynell and Devizes (WWYKD); North East Wiltshire (NEW) and Sarum. Each locality has a separate GP Chair and Locality Director. Some Localities are split further into more local groups.

GP Practices:
Family doctors or GPs usually provide the first point of contact between a patient and the NHS. GPs work together in independent businesses called practices.

Key:

Bodies to be abolished	Statutory bodies or functions	Local arrangements
------------------------	-------------------------------	--------------------

GP Practices X 63